

The Anvil, 2A Edge Bottom, Denholme, Bradford, BD13 4JW

£650 Per Calendar Month

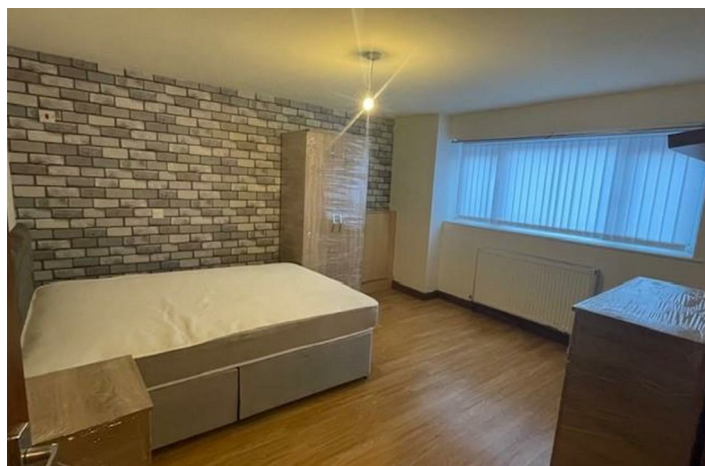
- Quirky Upside Down Cottage in the Village of Denholme
- Ground Floor - Two Bedrooms, Utility & Two Bedrooms
- Part Furnished
- EPC - D / Council Tax Band - B
- Entrance Porch & Hallway
- First Floor - Lounge & Kitchen
- Allocated Parking & Patio Area
- Available Now

2A Edge Bottom, Bradford BD13 4JW

Located in the Village of Denholme, this quirky upside-down cottage is in a quiet position close to Village amenities. The property is Part Furnished comprising of; Ground Floor; Entrance Porch, Hallway, Two Bedrooms, Utility Area, Bathroom, Storage Room, Stairs to First Floor; Lounge & Kitchen with Appliances. Available Now. EPC - D. Council Tax Band - A.



Council Tax Band: B



Entrance Porch

Entrance Porch Leading to Entrance Hallway

Entrance Hallway

Tiled Flooring. Radiator. Stairs & Banister. Large Storage Room.

Ground Floor Bedroom 2

8'11 x 8'08

Vinyl Flooring. Double Glazed Window. Radiator.

Ground Floor Bedroom 1

12'06 x 11'04

Laminate Flooring. Radiator. Double Glazed Window.

Utility Room Area

Cupboards. Plumbing for washer. Door to bathroom

Ground Floor Bathroom

Tiled Flooring. Chrome Wall Radiator. White WC, Basin, & Bath with Shower Over

First Floor Landing

Stairs & Banister. Wooden Flooring. Velux Window

Upstairs Lounge

18'11 x 9'08

Wooden Flooring. Radiator. Double Glazed Window & Velux Window

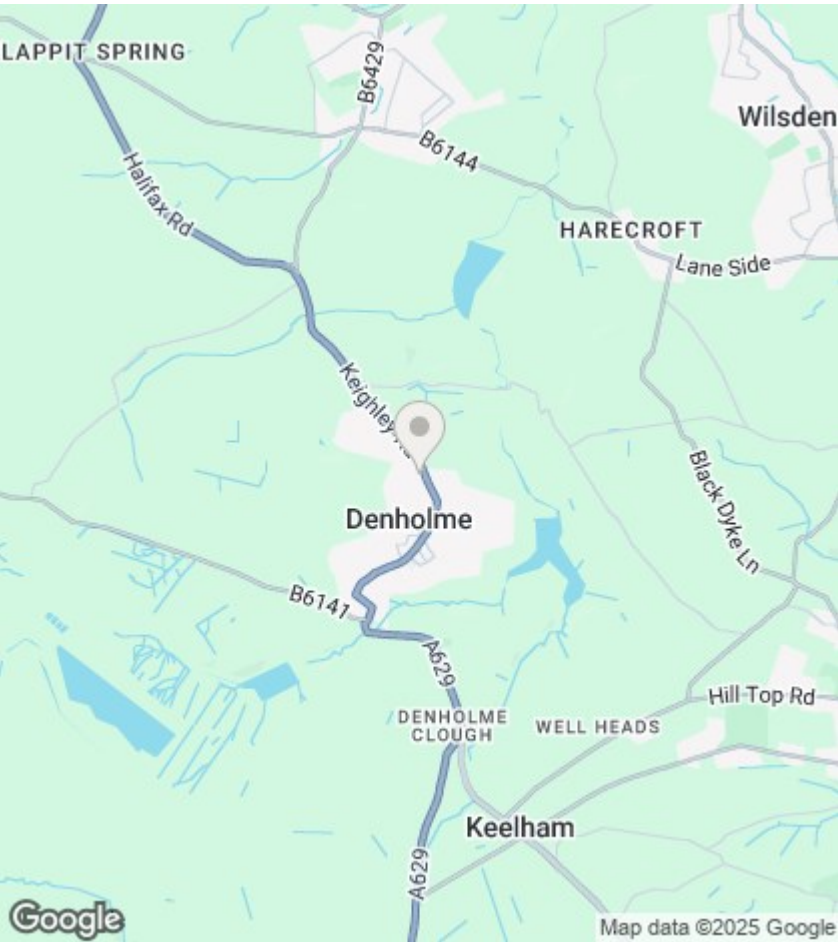
Upstairs Kitchen

12'02 x 10'08

Vinyl Flooring. Radiator. Velux Window. Boiler. Wooden Base Cupboards, Units & Drawers with Work Tops. Fridge. Washing Machine. Electric Oven & Gas Hob with Extractor Fan

Outside

Allocated Parking Space. Small Patio area to side with shed



Directions

Viewings

Viewings by arrangement only.
Call 01274884040 to make an appointment.

EPC Rating:
D

| Energy Efficiency Rating | | |
|---|-------------------------|-----------|
| | Current | Potential |
| Very energy efficient - lower running costs | | |
| (92 plus) A | | |
| (81-91) B | | 88 |
| (69-80) C | | |
| (55-68) D | 60 | |
| (39-54) E | | |
| (21-38) F | | |
| (1-20) G | | |
| Not energy efficient - higher running costs | | |
| England & Wales | EU Directive 2002/91/EC | |